

PRODUCT SPECIFICATION 产品规格书

NM28016A-L

LED Round Mirror Cabinet
LED圆型镜柜



(Rough-in Dimensions):

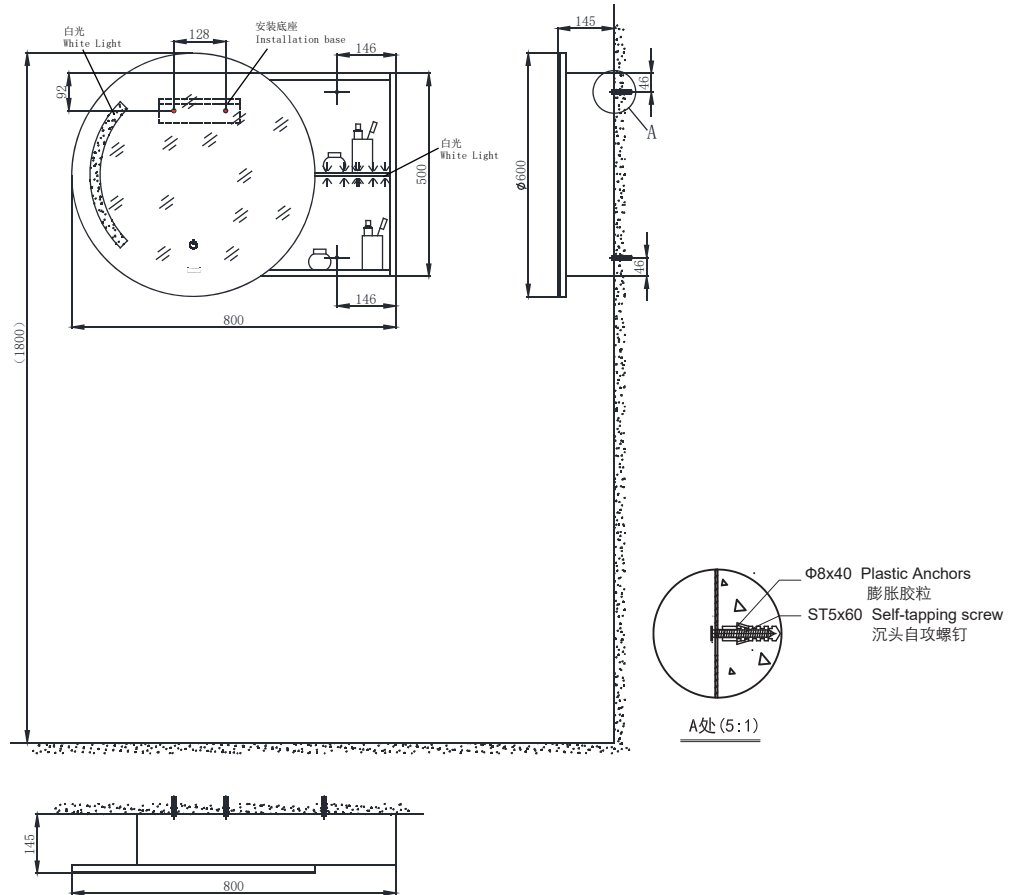
安装尺寸图:

(Unit): mm

单位: 毫米

Size: 800*600*145mm

尺寸: 800*600*145mm



Item No. 品号	NM28016A-L		
Available Color 颜色	Gray 伦敦灰		
Materials 材质	Plywood 多层板		
Shipping Package 运输包装	CTN/Set: 1 CTN 箱/套: 1 箱	M ³ /CTN: 0.12 M ³ 体积/箱: 0.12 M ³	G.W/CTN: 12.5 kg 毛重/箱: 12.5 kg
Hardware Accessories 五金配件	No 无		
Certification is introduced 认证介绍 (电器)	IP44certification IP44认证		
Function is introduced 功能介绍	LED function LED功能		

Remarks: Installation screw accessories included, 6000K white light source, voltage: AC220V, frequency: 50HZ. Touch the switch
备注: 含安装螺丝配件, 6000K白色光源, 电压: AC220V, 频率: 50HZ. 触摸开关。

INNOCI reserves the right to make changes or modifications on any of its products without advance notice.
INNOCI 艺耐公司保留不事先通知便改变或修改的权利

innoci[®]

Innoci Sanitary ware Co.,Ltd
www.innoci.com

Version : A0
版次 : A0